

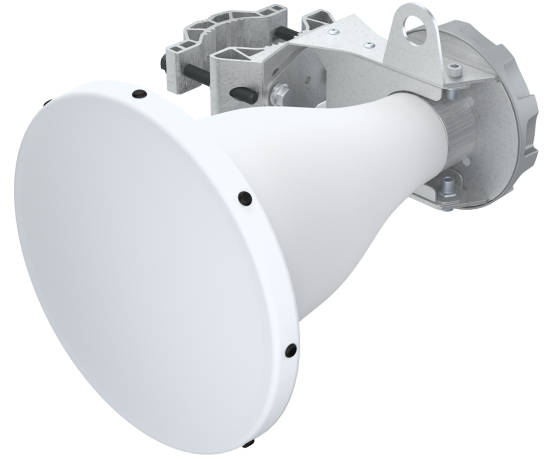
SH30WB GO 5 + 6 GHz Wideband 30° Symmetrical Horn

Sector Horn Antenna For Highly Scalable Multiband Fixed Wireless Networks

SH30WB-GO is a 30° Symmetrical Horn Antenna with symmetrical beam pattern and attenuated side lobes. This Antenna offers great noise rejection in a extremely wide working band covering entire 5 GHz and 6 GHz unlicensed bands. They are perfect for high-density AP clusters and dense co-location deployments.

These antennas provide unmatched scalability, exceptional longevity, and outstanding cost-effectiveness. Built from highly corrosion-resistant materials, they are designed for long-term deployment in the most demanding environments, including coastal areas and other harsh outdoor conditions.

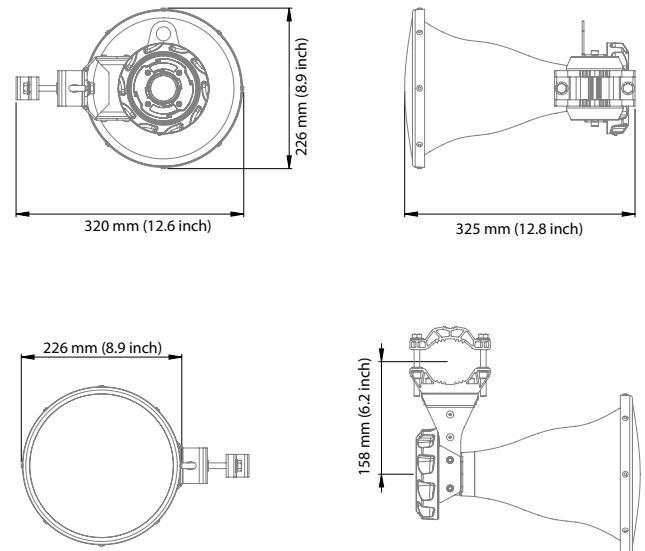
- Wideband performance covering entire 5 GHz and entire 6 GHz unlicensed bands
- Industry-changing TwistPort™ waveguide connector. Connect directly to waveguide ported radios or use TP Adaptor (TPA) to convert to common coaxial connectors.
- Built of high grade aluminum sheets and extruded aluminum for extreme outdoor resistance including harsh salt water and chemically challenging environments.
- Extremely lightweight and compact for low tower load and low wind loading
- Stainless steel hardware with anti-seize coating
- Industry leading ergonomics with an integrated eyelet for carabiner attachment
- Highly resistant dual layer ABS radome with additional PMMA protection layer



TECHNICAL DATA

Radio Connection	TwistPort™ Waveguide Connector
Antenna Type	Horn
Materials	Aluminum, Stainless Steel, ABS, PMMA
Environmental	IP55
Pole Mounting Diameter	40-80 mm (1.5-3.1 inch) Recommended as close to 80 mm (3.1 inch) as possible
Temperature	-35°C to +60°C (-31°F to +140°F)
Wind Survival	160 km/h (100 mph)
Wind Load	46/28 N - Front/Side at 160 km/h (100 mph)
Effective Projected Area	381/232 cm ² - Front/Side (59.2/36 in ²)
Mechanical Adjustment	± 25° Elevation
Weight	2.0 kg / 4.4 lbs – single unit 3.0 kg / 6.6 lbs – single unit incl. package
Dimensions	Single unit retail box: 380 × 300 × 300 mm (15.0 × 11.8 × 11.8 inch)

PRODUCT DIMENSIONS



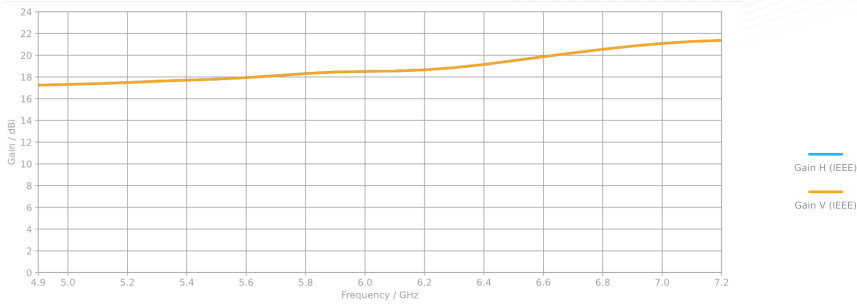
PERFORMANCE

Frequency Range	4900 - 7200 MHz
Gain	18 dBi (4900 - 6200 MHz) 20 dBi (6200 - 7200 MHz)
Azimuth Beam Width -3 dB/-6dB	H 20°, V 21° / H 29°, V 30°
Elevation Beam Width -3 dB/-6dB	H 21°, V 20° / H 30°, V 29°
Beam Efficiency*	97 %
Front-to-Back Ratio	35 dB ≤
VSWR**	≤ 1.6 (5000 - 7100 MHz) ≤ 1.9 (4900 - 7200 MHz)
Polarization**	Dual Linear H + V
Impedance	50 Ohm

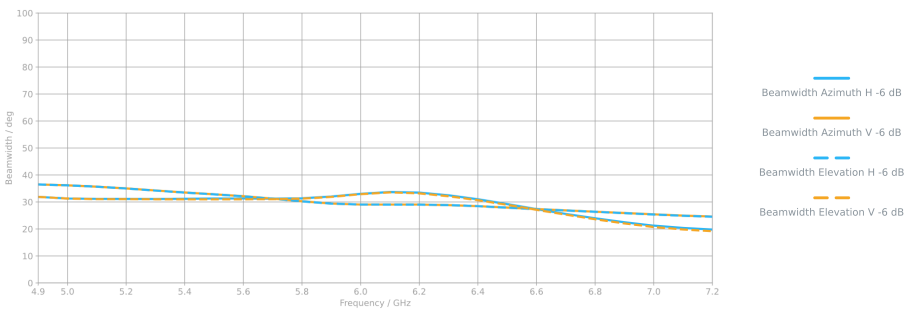
* Beam efficiency defined up to first null

** Defined by connected antenna feed or radio

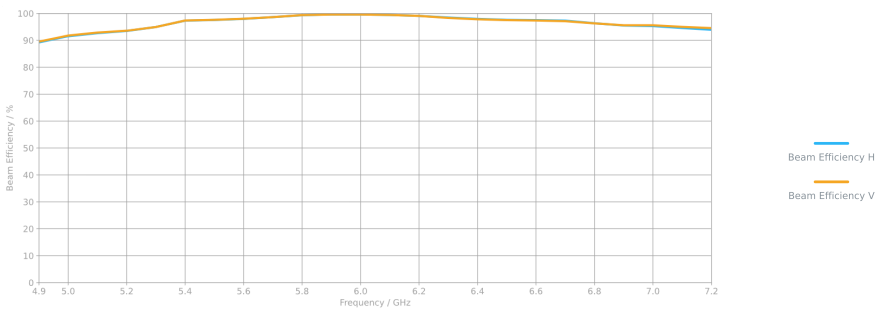
ANTENNA GAIN



ANTENNA BEAMWIDTH



BEAM EFFICIENCY



RADIATION PATTERNS

